

This year's road program will be performed in two Phases. Phase 1 will commence with milling of streets the week of May 23<sup>rd</sup>. It is estimated that milling will require 3-4 working days. Roads will be resurfaced after milling is completed. It is anticipated that Phase 2 will commence during July. Residents can expect minor inconveniences, but through traffic will be allowed and safety will be ensured.

The following streets will be resurfaced as part of this year's program:

Phase 1:

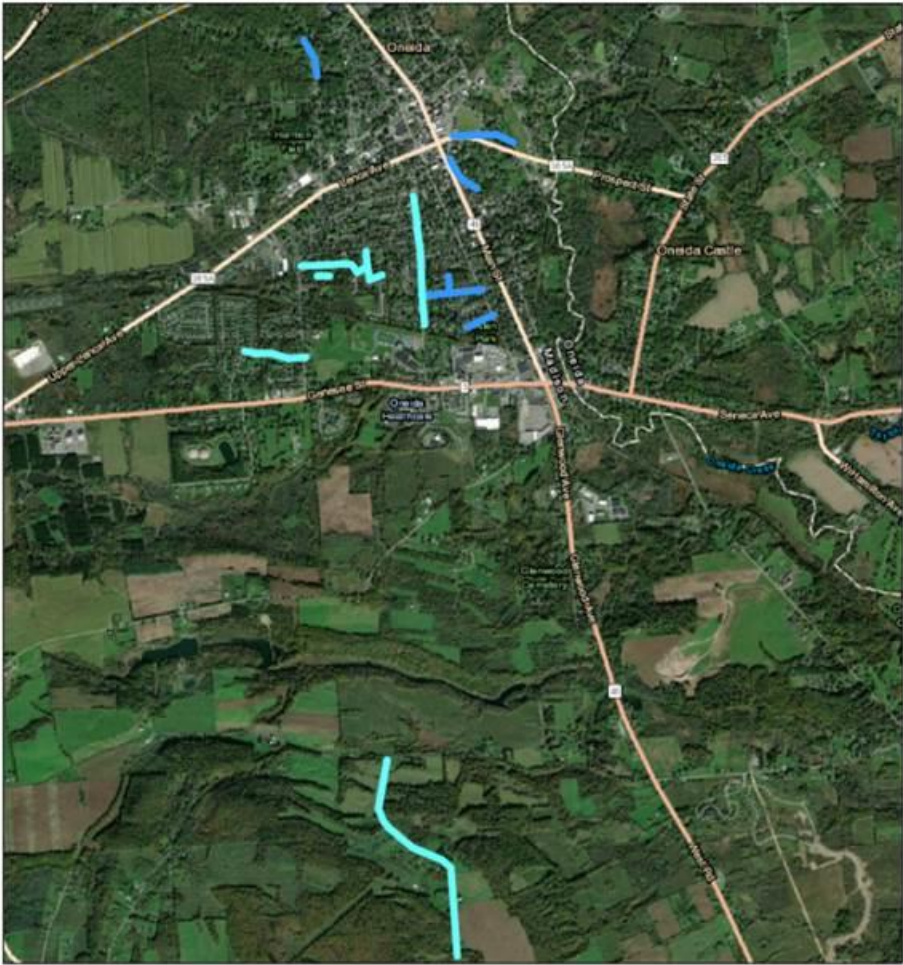
- Mott Street from Cedar St. to Stephens St.
- MacArthur Parkway from Cedar St. to Lexington Ave
- Belmont Avenue from Seneca Street to Broad Street
- Tilden Street from Belmont Ave to end
- Allen Park Place from Broadway Place to Broad Street
- North Willow Street from Grant Street to Ridge Road
- Patio Circle from Sayles Street to Stoneleigh Road

Phase 2:

- Crescent Avenue from Mount Hope Avenue to Wickens Road
- Grant Avenue from South Willow Street to end
- Seneca Street from Stone Street to Summit Avenue
- Lincoln Avenue from Sayles Street to Elmhurst Avenue
- Lincoln Avenue from Elmhurst Avenue to Oxford Street
- Lincoln Avenue from Oxford Street to Florence Avenue
- Oxford Street from Cleveland Avenue to southern end

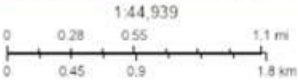
In addition, all streets which were resurfaced last year will receive a micro-pave (rapid set, latex modified overlay) coat this year in order to provide a textured wearing surface and protection for the asphalt pavement.

# Paving 2022



May 4, 2022

- Paving 2022 Phase 2
- Paving 2022 Phase 1



Source: Esri, Maxar, GeoEye, Earthstar Geographics, CNES/Airbus DS, USDA, USGS, AeroGRID, IGN, and the GIS User Community, Esri, HERE, Garmin, (c) OpenStreetMap contributors, Esri, HERE, Garmin, (c) OpenStreetMap contributors, and the GIS user community